

TEST PRESSURE GAUGES DN 150

Instruments realized to be used as manometers of control or recalibration and in other applications where the accuracy and reliability are a very important element.

Whenever is requested the conformity to safety normatives EN 837.1 and ANSI B40.1 is possible to use the models "Solid Front" and "High Accuracy", these instruments have a solid separating wall in stainless steel, placed between the dial and the elastic element and an integral blow out back that is released from the case whenever a pressure is created inside the case, due to leaks or accidental ruptures of the elastic element.

They can be used with fluids or gasses that do not have high viscosity and do not crystallize.

Each instrument is supplied with a MEI calibration certificate that guarantee the traceability to the National and International master primary instruments. Upon request we can supply the calibration certificate issued by an ENAC Internationally recognized laboratory.



Constructive and functional characteristics:

Inox type

Accuracy: Type 0.6 according to EN 837-1.
Ambient temperature: -25...+65 ° C.
Process fluid temperature: -40... +150 ° C.
Calibration temperature: +20° C.
Working pressure: Max 75% of E.S.
Overpressure: 30% of E.S.
Protection degree: IP 55 as per IEC 529.
Process connection racord: In AISI 316.
Elastic element: In AISI 316 seamless tube.
Welding: AISI 316 L TIG.
Case: in AISI 304.
Bezel: bayonet AISI 304.
Window: methacrylate 4 mm thickness.
Movement: Stainless steel with internal limit stops for minimum and maximum pressure.
Dial: Aluminium, white with black markings and anti-parallax mirror band.
Pointer: Black painted aluminium, micrometric adjustable.
Gasket, blow out vent and filling plug: EPDM.

Solid-Front type

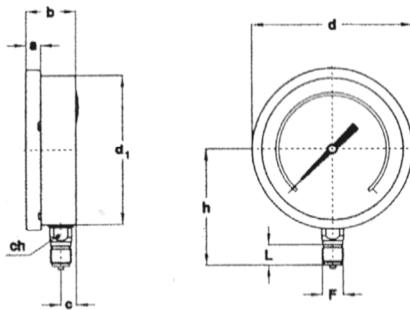
Blow out disk: AISI 304 st.
Window: laminated safety glass.
Gasket, blow out vent and filling plug: EPDM.
Other features: As standard type.

High Accuracy type

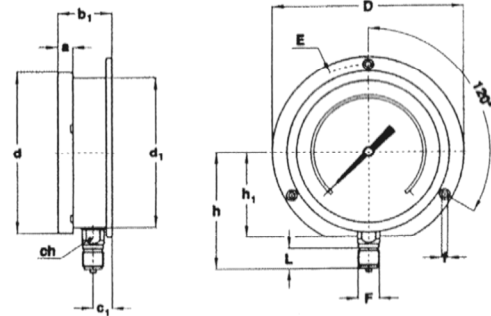
Accuracy: Type 0.25 according to EN 837-1.
Ambient temperature: -15...+65 ° C.
Process fluid temperature: max. +65° C.
Calibration temperature: +20° C.
Working pressure: Max 75% of E.S.
Overpressure: 25% of E.S. for <60bar; 15% of E.S for >100bar scales.
Protection degree: IP 55 as per IEC 529.
Process connection Racord: In AISI 316 L.
Elastic element: Beryllium copper.
Welding: Silver alloy.
Case: in AISI 304.
Bezel: bayonet AISI 304.
Blow out disk: AISI 304 st.
Window: laminated safety glass.
Movement: High precision type.
Dial: Aluminium light green with, black markings and anti-parallax mirror band.
Pointer: Black painted aluminium, micrometric adjustable, anti-parallax mirror band.
Gasket, blow out vent and filling plug: EPDM.

This publication does not try to establish the bases of a contract and the company keeps the right to modify without previous notice the design and the specifications of the instruments, in accordance with his politics of continued development.

INOX TYPE – TYPES AND DIMENSIONS



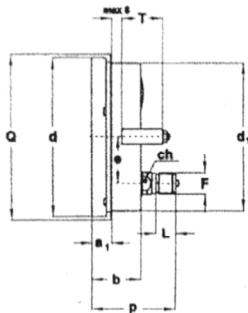
TYPE 1
Local direct assembly
Lower pressure entry



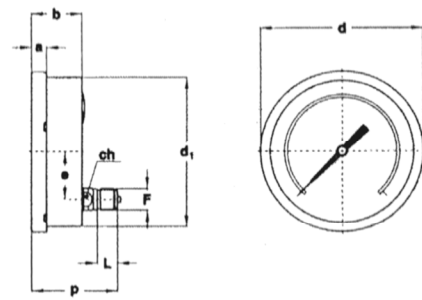
TYPE 2
Panel assembly
Lower pressure entry and clamp

TYPE	F	a	b	b ₁	c	c ₁	d	d ₁	f	h	h ₁	D	E	ch	L
1	½" Gas or NPT	15	50,5	--	15,5	--	161	149,6	--	117	--	--	--	22	20
2	½" Gas or NPT	15	--	54	--	19	161	149,6	6	117	85	190	175	22	20

Dimensions in mm.



TYPE 3
Panel assembly
With clamp and Back pressure entry.



TYPE 4
Local direct assembly
With Back pressure entry.

TYPE	F	a	a ₁	a ₂	b	d	d ₁	e	f	h ₁	p	D	E	Q	T	V	Z	ch	L
3	½" Gas or NPT	--	20,5	--	50,5	161	149,6	47,8	-	--	85,5	--	--	164	41,5	106	155	22	20
4	½" Gas or NPT	15	--	--	50,5	161	149,6	47,8	-	--	85,5	--	--	--	--	--	--	22	20
5	½" Gas or NPT	--	--	25,5	50,5	161	149,6	47,8	6	85	85,5	190	175	--	--	--	--	22	20

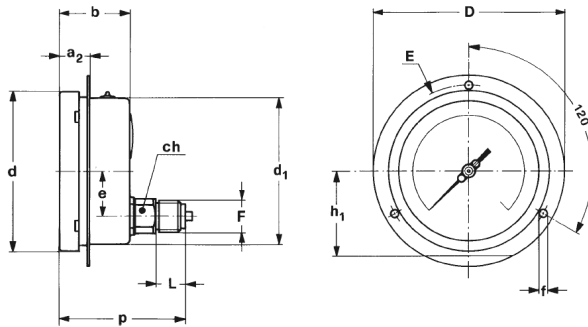
Dimensions in mm.

This publication does not try to establish the bases of a contract and the company keeps the right to modify without previous notice the design and the specifications of the instruments, in accordance with his politics of continued development.

TYPE 5

Panel assembly

With frontal flange and Back pressure entry.

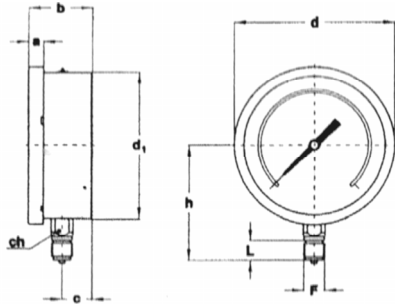


This publication does not try to establish the bases of a contract and the company keeps the right to modify without previous notice the design and the specifications of the instruments, in accordance with his politics of continued development.

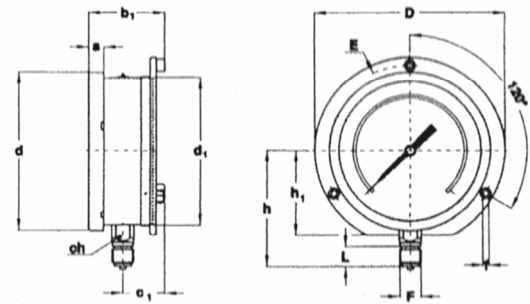
MEI Manometría e Instrumentación, s.l.

Pol. Ind. "El Pla" C/ Comerç, 2-22 nave 13 E-08980 Sant Feliu de Llobregat Barcelona Spain
Tf. +34 934 403 939 Fax. +34 934 483 986 www.mei.es e-mail: info@mei.es

SOLID FRONT AND HIGH ACCURACY TYPES - TYPES AND DIMENSIONS



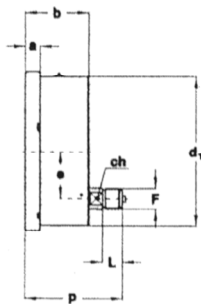
TYPE 1
Local direct assembly
Lower pressure entry



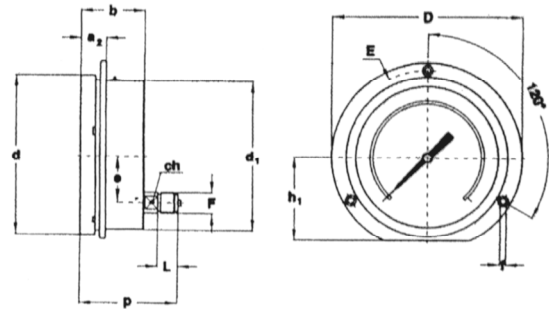
TYPE 2
Panel assembly
Lower pressure entry and clamp

Mod.	TYPE	F	a	b	b ₁	c	c ₁	d	d ₁	f	h	h ₁	D	E	L	ch
Solid Front	1	1/2" Gas or NPT	15	64	--	30	--	161	150,5	--	117	--	--	--	20	22
Solid Front	2	1/2" Gas or NPT	15	--	75,5	--	40,5	161	150,5	6	117	85	190	175	20	22
Alta precisión	1	1/2" Gas or NPT	15	64	--	29	--	161	150,5	--	117	--	--	--	20	24
Alta precisión	2	1/2" Gas or NPT	15	--	75,5	--	40,5	161	150,5	6	117	85	190	175	20	24

Dimensions in mm



TYPE 3
Local direct assembly
With Back pressure entry.



TYPE 4
Panel assembly
With frontal flange and Back pressure entry.

Mod.	TYPE	F	a	a ₂	b	d	d ₁	e	f	h ₁	p	D	E	L	ch
Solid Front	3	1/2" Gas or NPT	15	--	64	161	150.5	47.8	--	--	96	--	--	20	17
Solid Front	4	1/2" Gas or NPT	--	25.5	64	161	150.5	47.8	6	85	96	190	175	20	17
High precision	3	1/2" Gas or NPT	15	--	64	161	150.5	47.8	--	--	97.5	--	--	20	17
High precision	4	1/2" Gas or NPT	--	25.5	64	161	150.5	47.8	6	85	97.5	190	175	20	17

Dimensions in mm

This publication does not try to establish the bases of a contract and the company keeps the right to modify without previous notice the design and the specifications of the instruments, in accordance with his politics of continued development.