

CAPSULE PRESSURE GAUGES FOR LOW PRESSURES DN 63

For measurement of low pressure and vacuum within the ranges -600..0/0..600 mbar for use on gas and dry air.

Constructive and functional characteristics:

Accuracy: Type 1.6 according to EN 837-1. ($\pm 1,6\%$ E.S.)

Ranges: -600.. 0 to 0.. 600 mbar or any other equivalent unit of pressure or vacuum, standard ranges according to IN 837-3. Double scale in mbar and mmH₂O

Ambient temperature: -20...+65 ° C.

Process fluid temperature: max +65 °C.

Temperature error: Additional error when temperature of the pressure element deviates from 20°C: $\pm 0,5\%$ of E.S every 10°C of variation.

Working pressure:
Steady: Max 75% of E.S.
Fluctuating: 2/3 of E.S.

Temporal overpressure: 25% of E.S. during a short period of time.

Outdoor grade of protection: IP31.

Process connection: Lower connection 1/4" BSP

Process connection racord: in brass.

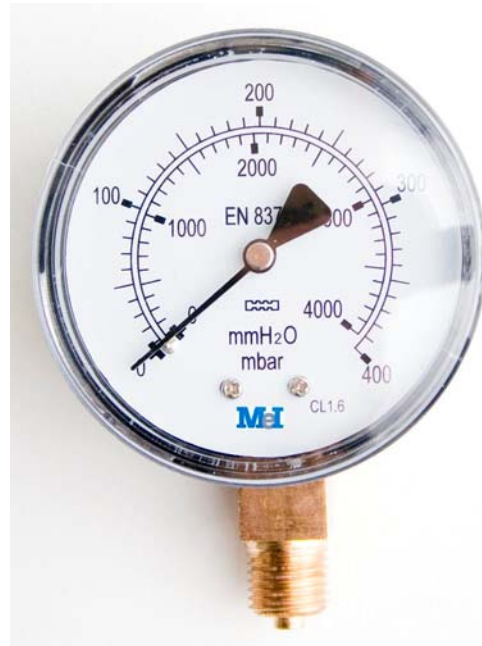
Capsule: phosphorous bronze.

Movement: In brass.

Case: Black painted steel.

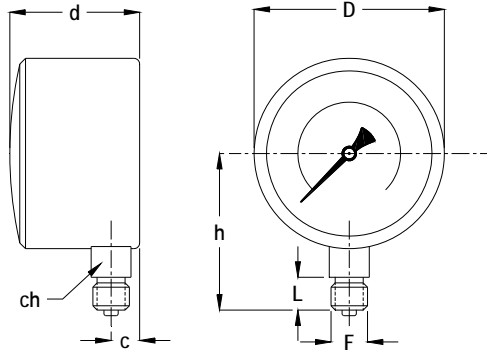
Window: clear transparent.

Pointer: Black painted aluminium.

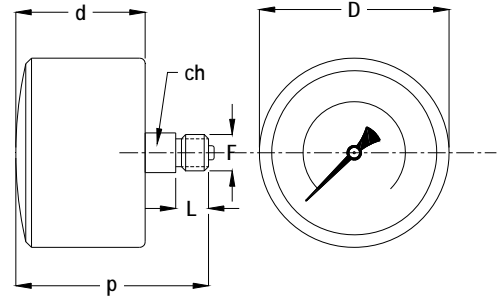


This publication does not try to establish the bases of a contract and the company keeps the right to modify without previous notice the design and the specifications of the instruments, in accordance with his politics of continued development.

DIMENSIONS
Inches (mm)



TYPE 1
Local direct assembly
Lower pressure entry



TYPE 2
Local assembly
Back pressure entry

DN	TYPE	c	ch	d	D	F	h	L	p
2.4" (63)	1	0.39" (10)	0.55"X0.16" (14x4)	1.81" (46)	2.60" (66)	1/4BSP	2.18" (55,3)	0.51" (13)	
2.4" (63)	2		0.55"X0.16" (14x4)	1.81" (46)	2.60" (66)	1/4BSP		0.51" (13)	2.67" (68)

This publication does not try to establish the bases of a contract and the company keeps the right to modify without previous notice the design and the specifications of the instruments, in accordance with his politics of continued development.